

SYSTEMATIC QUALITY

Underfloor distributors

Catalogue



GIFAS
ELECTRIC

02

PIAZZA

Pages 4 - 7

Introduction



Page 3

Overview
PIAZZA



Page 4

PIAZZA 580



Page 5

PIAZZA 700



Page 6

PIAZZA 1000



Page 7

PIAZZA

Pages 10 - 14

Practical
examples



Pages 10 - 13

Installation
instructions



Page 14

CAMPETTO

Pages 15 - 19

Overview
CAMPETTO



Page 15

CAMPETTO V



Page 16

CAMPETTO VI



Page 17

CAMPETTO VII



Page 18

CAMPETTO VIII



Page 19

CAMPETTO

Pages 20 - 24

Practical
examples



Pages 20 - 23

Installation
instructions



Page 24

RETRANT PICCOLINO

Pages 25 - 27

RETRANT



Page 25

PICCOLINO



Page 26

Practical
examples



Page 27

Underfloor distributors

Virtually invisible - always within reach



Over the following pages, you will see a synopsis of the advantages of our high-quality components and materials, and how we can help you, step by step, towards a future-proof underfloor distributor system that meets your individual preferences and requirements. We also pay close attention to reliability and quality in everything we do. "MADE in GERMANY".

To offer you the right product for every application, GIFAS has a number of different underfloor distributor systems of varying function, size and application in its portfolio.

One characteristic shared by all of the products is the uniqueness and knowledge of how to offer our customers tailored, VDE-compliant products that are virtually impossible to vandalise, remain fully capable of being walked or driven on during operation and which integrate seamlessly into the landscape.

Properties



Body and cover

The body of the underfloor distributor is made from stainless steel up to 6 mm thick, which is impervious to seismic movement, moisture, rodents and other environmental influences. The cover is also made from 6 mm stainless steel and can be designed to withstand the F900 weight class.



Solid rubber

All solid rubber distributors from GIFAS ELECTRIC are made from 100% vulcanised, self-extinguishing butyl rubber (Shore hardness 97), compliant with VDE 0471 Part 2.2. They are resistant to oils, various acids and alkalis, and are impervious to weld and spark showers. The solid rubber distributors we use mean that condensation build-up in the distributor caused by temperature fluctuations can be reliably ruled out.



C-SAFE (at customer's request)

The cable outlet guard is designed so that its flat and rounded construction presents no obstacle, trip hazard or sharp edges. The underfloor distributor system can be walked on or driven over without limit during operation, with supply lines being fully protected.



Gas springs

Gas springs assist with the opening and closing of the underfloor distributor system. They are not susceptible to faults, similar to those that are installed in the boot of your car.



Load classes

GIFAS underfloor distributor systems offer you the following types according to the DIN 124 load classes: A15 (pedestrian walkways and cycle lanes), B125 (truck and parking spaces), D400 (heavy goods vehicles) and F900 (airports and production halls with forklift truck traffic).



Substructures

These are designed so that you can choose underfloor distributor systems suitable for your cable depths. From TYPE 86-2 concrete shafts (telecoms shafts) with a steel body to DIN 4034-2 concrete rings, we offer you everything from depths of 50 cm to 2 m. Custom depths are also possible.



Ready-to-connect delivery

The underfloor distributor systems are supplied ready for connection and can be hooked up easily and effortlessly to the existing power network by an electrician.



Submersible bell (at customer's request)

In areas prone to flooding, underfloor distributors can be equipped with a submersible bell. The principle is similar to an inverted glass in a bowl filled with water. A bell of air forms around the solid rubber distributor, protecting the components from moisture.

Advantages



GIFAS assists you with professional advice on your applications, provided by contacts in your region. Make use of our sales and technology specialists to plan your customised systems.

Other benefits for you:

- Frost-proof operation thanks to cover heating
- Flooding-resistant on request
- Vandal-proof
- Electricity, water, compressed air and data connections - can be fitted as per the customer's request
- Tried-and-tested product range
- Production of individual and major series with long availability of spare parts
- Product-neutral delivery agreement texts in all common formats for your plans
- MADE IN GERMANY

The construction of our solid rubber distributors complies with the following standards: DIN EN 61439-2, DIN EN 61439-4, DIN VDE 0100-410, DIN VDE 0100-530, DIN VDE 0100-540, DIN VDE 0630, DIN VDE 0704, DIN 49462/63, BGA-V1, DGUV-A3.

Overview of PIAZZA 580 / 700 / 1000



PIAZZA 580 (D400)



PIAZZA 700 (D400)



PIAZZA 1000 (D400)

Product characteristics

- Can be locked, walked on or driven over during operation
- Cover can be filled with surrounding material or designed as a floor plate
- Secured against unauthorised opening (vandal-proof!)
- Gas springs for force-free, assisted opening
- Frost-proof operation thanks to cover heating
- If required with submersible bell
- Maintenance-free GIFAS solid rubber distributor system guarantees optimum operating safety down to -40°C
- No formation of condensation thanks to the GIFAS solid rubber distributor
- Resistant to environmental influences
- Stainless steel construction, all metal parts made from V2A
- Visible reflectors on the opened cover system
- Distributor fastening on the underside of the cover
- The connector distributor can be accessed when installed (E-check - DGUVA3)
- Pit covers, locks and distributors can be replaced



Vandal-proof

Technical data	PIAZZA 580	PIAZZA 700	PIAZZA 1000
Area of use	Internal / external area	Internal / external area	Internal / external area
Classification as per EN 124	400kN (40t) / D400	400kN (40t) / D400	400kN (40t) / D400
Cover	Covers can be individually filled / paved 580x550x70mm	Covers can be individually filled / paved 700x700x70mm	Covers can be individually filled / paved 1000x1000x70mm
Weight	Approx. 350kg	Approx. 450kg	Approx. 780kg
Installation depth	Approx. 1200mm	Approx. 1300mm	Approx. 1300mm
GIFAS solid rubber distributors	3800 series Can be equipped in accordance with the client's wishes (power, water, waste water, compressed air and EDP connections)	7800 series	7800/7900 series



Underfloor distributor in the snow with cover heating



with optional engraving

PIAZZA 580



Solid stainless steel construction (V2A) 580 x 580 mm, load capacity up to 400 kN, gas springs for fully automatic opening, shaft cover can be custom-filled, distributor as per the client's request.

Technical additions

Cover filling:	The pit with a depth of 70 mm can be custom-filled to blend in with its surroundings
Cable exit flap:	(180x130 mm) integrated into the shaft cover frame
Locking:	A self-cleaning lock with snap fastener closes the shaft cover Cable exit flap secured with a double bit lock (locking tool included in the scope of delivery)
Heating:	To prevent the Floor Pit from being frozen in the closed position, a thermostatically controlled heating band is built into the lid of the Floor Pit housing.

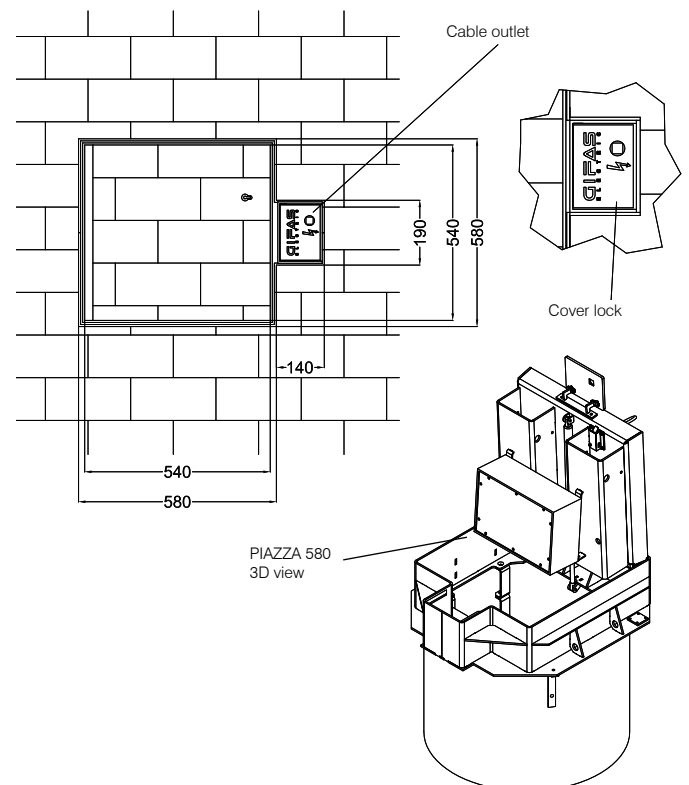
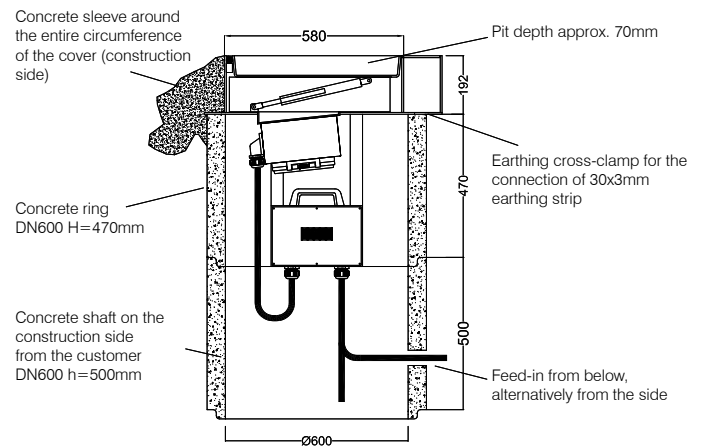
It is the client's responsibility to ensure the standards-appropriate substructure, correct installation of the shaft and corresponding drainage. The shaft cover is not sealed against surface water.

Supplied package

Stainless steel construction with

- fillable shaft cover
- solid rubber electrical distributor
- junction box

Fully assembled and wired.
Mounted on concrete ring (H = 470 mm, NW = 600 mm).



PIAZZA 700

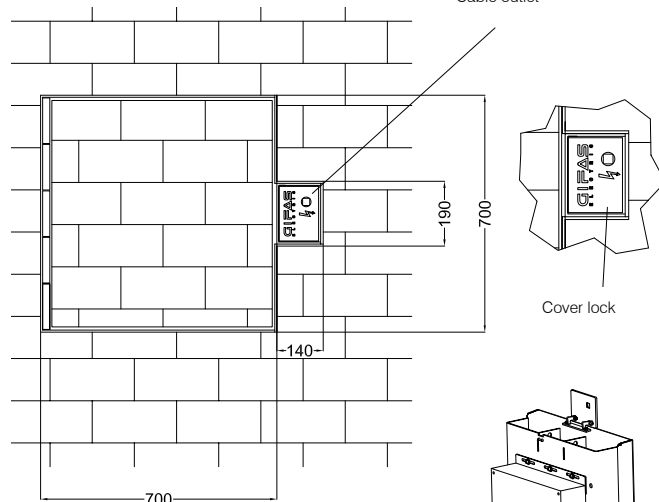
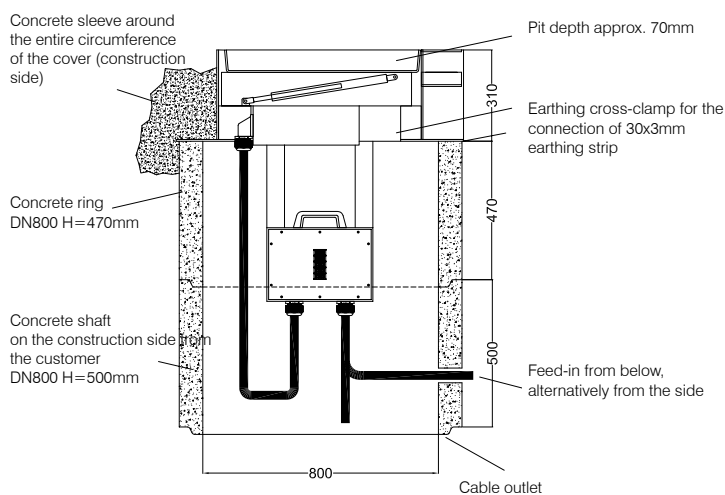
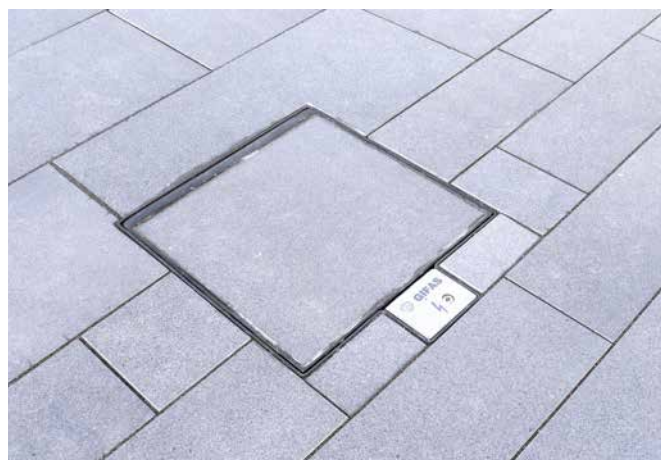


Solid stainless steel construction (V2A) 700 x 700 mm, load capacity up to 400 kN, gas springs for fully automatic opening, shaft cover can be custom-filled, distributor as per the client's request.

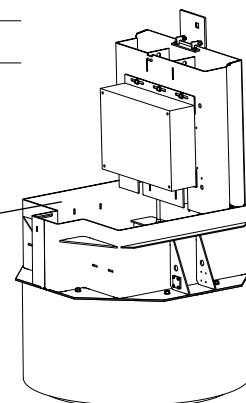
Technical additions

Cover filling:	The pit with a depth of 70 mm can be custom-filled to blend in with its surroundings.
Cable exit flap:	(180x130 mm) integrated into the shaft cover frame
Locking:	A sturdy closing mechanism (with snap lock) closes the shaft cover and it can also be secured with a shackle lock. Cable exit flap secured with a double bit lock (locking tool included in scope of delivery).
Heating:	To prevent the Floor Pit from being frozen in the closed position, a thermostatically controlled heating band is built into the lid of the Floor Pit housing.

It is the client's responsibility to ensure the standards-appropriate substructure, correct installation of the shaft and corresponding drainage. The shaft cover is not sealed against surface water.



PIAZZA 700
3D view



Supplied package

- Stainless steel construction with
- fillable shaft cover
- solid rubber electrical distributor
- junction box

Fully assembled and wired.

Mounted on concrete ring (H = 470 mm, NW = 800 mm).

PIAZZA 1000



Solid stainless steel construction (V2A) 1000 x 1000 mm, load capacity up to 400 kN, gas springs for fully automatic opening, shaft cover can be custom-filled, distributor as per the client's request.

Technical additions

Cover filling:	The pit with a depth of 70 mm can be custom-filled to blend in with its surroundings.
Cable exit flap:	(180x130 mm) integrated into the shaft cover frame.
Locking:	A sturdy closing mechanism (with snap lock) closes the shaft cover and it can also be secured with a shackle lock. Cable exit flap secured with a double bit lock (locking tool included in scope of delivery).
Heating:	To prevent the Floor Pit from being frozen in the closed position, a thermostatically controlled heating band is built into the lid of the Floor Pit housing.

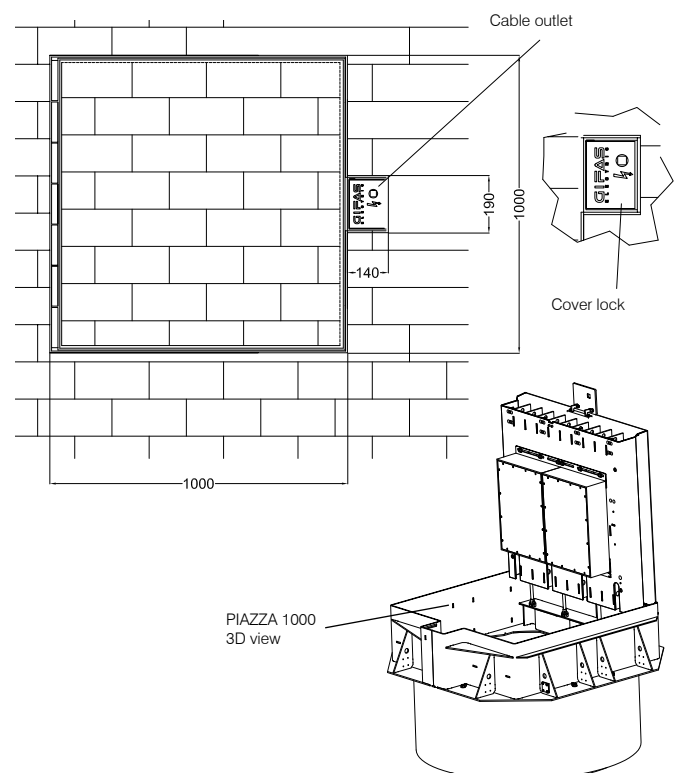
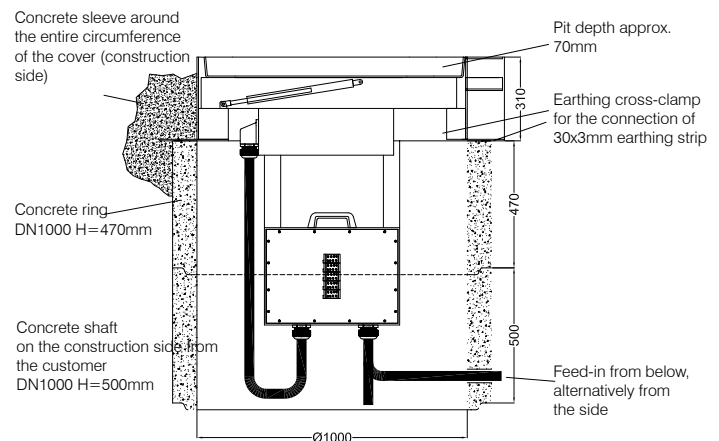
It is the client's responsibility to ensure the standards-appropriate substructure, correct installation of the shaft and corresponding drainage. The shaft cover is not sealed against surface water.

Supplied package

Stainless steel construction with

- fillable shaft cover
- solid rubber electrical distributor
- junction box

Fully assembled and wired.
Mounted on concrete ring (H = 470 mm, NW = 1000 mm).



PIAZZA (D400)



Lübeck town hall market, PIAZZA with payment system



Place de la Constitution, Luxembourg, PIAZZA 1000



Kempen, Buttermarkt, PIAZZA 1000



Altmarkt, Dresden, PIAZZA 700



Quedlingburg market square, PIAZZA 1000



Quedlingburg market square, PIAZZA 1000

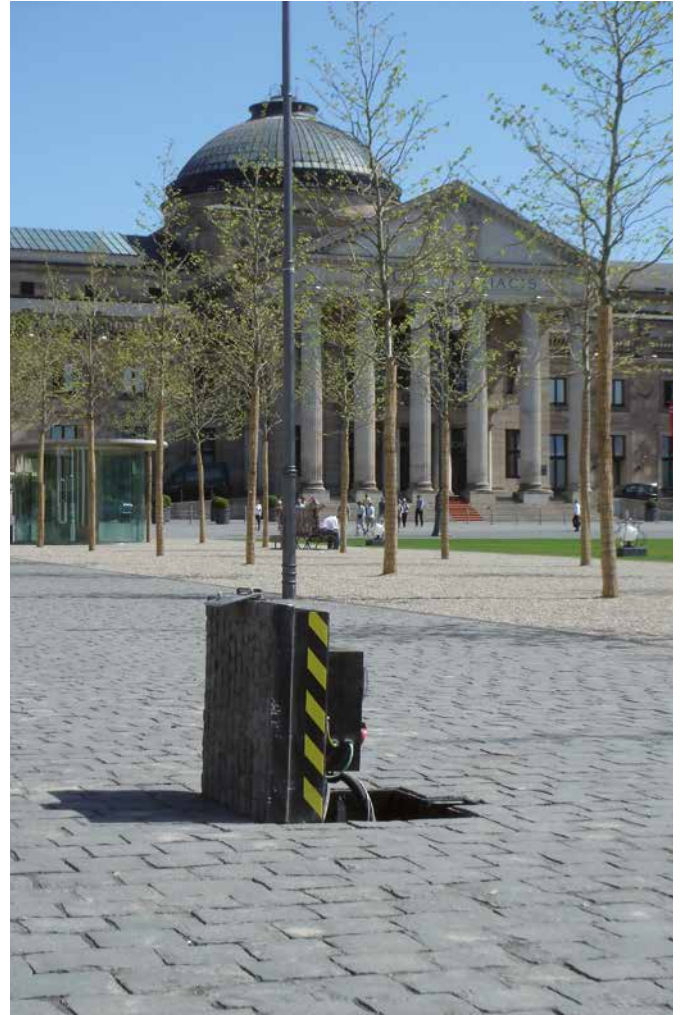
PIAZZA (D400)



Göttingen market square, PIAZZA 1000



Münster Speicherstadt Nord, PIAZZA 700



Kurhaus Wiesbaden, PIAZZA 700



Münchner Residenz, PIAZZA 700



Dresden "Zwinger", PIAZZA 700

PIAZZA (D400)



Thyssen Duisburg, PIAZZA 700



Port Marina Loitz, PIAZZA 700



Old BELVAL steel works, Luxembourg, PIAZZA 580



Glasgow Sports Arena / Velodrome, PIAZZA 700



SpOrt Stuttgart, PIAZZA 580

PIAZZA (F900)



Glasgow Bond Heliport, PIAZZA 2000



Glasgow Bond Heliport, PIAZZA 2000



Hangar, PIAZZA 2000



Hangar, PIAZZA 2000



Airport, Faeroe Islands, PIAZZA 2000



Katowice Airport, PIAZZA 2000

PIAZZA installation and assembly procedure



Excavating the installation pit



Customer-side concrete ring



Insertion of the unit



Insertion of the entire unit into the prepared installation pit



Levelling



Decanting and concreting-in



Adaptation to the surroundings with filler material



Fully installed PIAZZA

With underfloor systems involving fresh water, the terminal distributor must be hung on the side opposite the water tap!

Overview of CAMPETTO V / VI / VII / VIII



CAMPETTO V



CAMPETTO VI



CAMPETTO VII



CAMPETTO VIII

Product characteristics

- Can be locked, walked on or driven over during operation
- Cover can be filled with surrounding material or designed as a floor plate
- Secured against unauthorised opening (vandal-proof!)
- Gas springs for force-free, assisted opening
- Frost-proof operation thanks to cover heating option
- If required with submersible bell
- Maintenance-free GIFAS solid rubber distributor system guarantees optimum operating safety down to -40°C
- No formation of condensation thanks to the GIFAS solid rubber distributor
- Resistant to environmental influences
- Stainless steel construction, all metal parts made from V2A
- Visible reflectors on the opened cover system
- Cover pit can be removed by loosening the screws for maintenance purposes
- Distributor fastening on the underside of the cover
- The connector distributor can be accessed when installed (E-check - DGUV A3)
- Pit covers, locks and distributors can be replaced



Technical data	CAMPETTO V	CAMPETTO VI	CAMPETTO VII	CAMPETTO VIII
Area of use	Internal / external area	Internal / external area	Internal / external area	Internal / external area
Maximum load	Up to 30kN (3t), special designs 50kN	125 kN (12.5t)	Up to 30kN (3t) Special designs 50kN	125 kN (12.5t)
Classification as per EN 124	15 kN (1.5t) / A15	125 kN (12.5t) / B125	15 kN (1.5t) / A15	125 kN (12.5t) / B125
Cover	Stainless steel non-slip steel floor plate, can be supplied in two sizes 628x435mm / 778x535mm	Covers can be individually filled / paved, can be supplied in two sizes 628x435mm / 778x535mm	Stainless steel non-slip steel floor plate 880x992mm	Covers can be individually filled / paved 880x992mm
Weight	Approx. 60kg	Approx. 70kg	Approx. 250kg	Approx. 250kg
Installation depth	Dependent on design 500 or 670mm	Dependent on design 500 or 670mm	1000mm	1000mm
GIFAS solid rubber distributors	Individual series 7200 to 7900 Can be equipped in accordance with the client's wishes (power, water, waste water, compressed air and EDP connections)			



Underfloor distributor in the snow with cover heating



with optional engraving

CAMPETTO V (A15)



Solid stainless steel construction (V2A) in two sizes, load capacity up to 30 kN (special design up to 50 kN), gas springs for fully automatic opening, shaft cover made from non-slip steel floor plate, distributor as per the client's request.

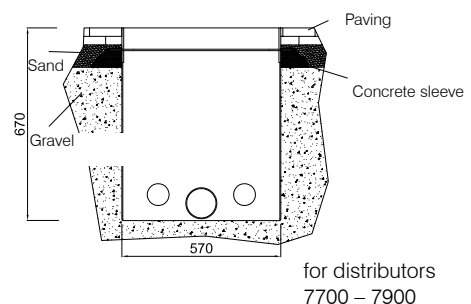
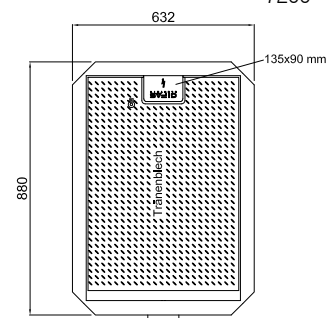
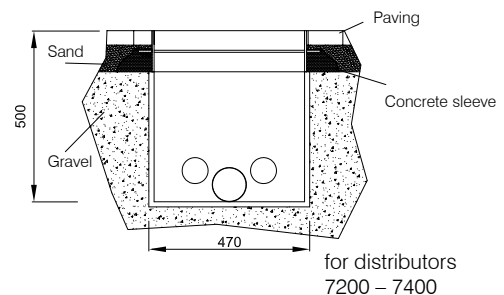
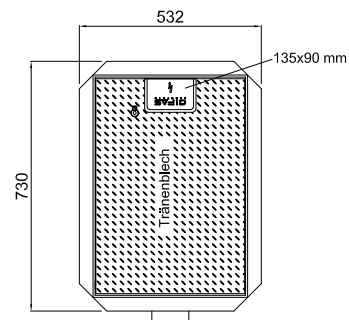
Technical additions

Cover:	V2A non-slip steel floor plate
Cable exit flap:	(135x90 mm) in the centre on the head side of the cover
Locking:	A self-cleaning lock with snap fastener closes the shaft cover (locking tool included in the scope of delivery).
Heating (optional):	To prevent the Floor Pit from being frozen in the closed position, a thermostatically controlled heating band is built into the lid of the Floor Pit housing.

It is the client's responsibility to ensure the standards-appropriate substructure, correct installation of the shaft and corresponding drainage. The shaft cover is not sealed against surface water.

Supplied package

- Stainless steel construction with
 - cover made from V2A non-slip steel floor plate
 - solid rubber electrical distributor
 - junction box
- Fully assembled and wired.



CAMPETTO VI (B125)



Solid stainless steel construction (V2A) in two sizes, load capacity up to 125kN, gas springs for fully automatic opening, shaft cover can be custom-filled, distributor as per the client's request.

Technical additions

Cover filling:	The pit with a depth of 70 mm can be custom-filled to blend in with its surroundings.
Cable exit flap:	(135x90 mm) in the centre on the head side of the cover
Locking:	A self-cleaning lock with snap fastener closes the shaft cover (locking tool included in the scope of delivery).
Heating (optional):	To prevent the Floor Pit from being frozen in the closed position, a thermostatically controlled heating band is built into the lid of the Floor Pit housing.

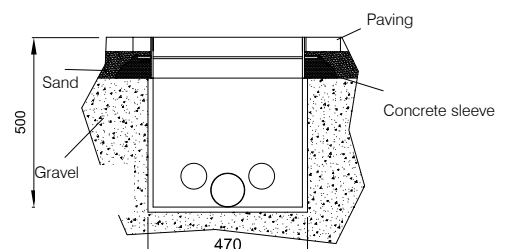
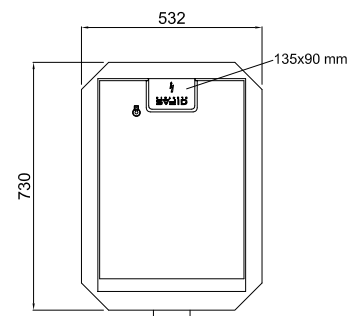
It is the client's responsibility to ensure the standards-appropriate substructure, correct installation of the shaft and corresponding drainage. The shaft cover is not sealed against surface water.

Supplied package

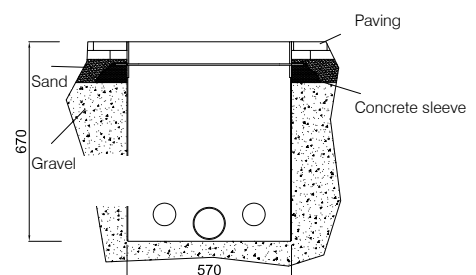
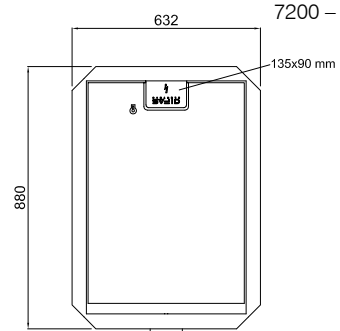
Stainless steel construction with

- fillable shaft cover
- solid rubber electrical distributor
- junction box

Fully assembled and wired.



for distributors
7200 – 7400



for distributors
7700 – 7900

CAMPETTO VII (A15)

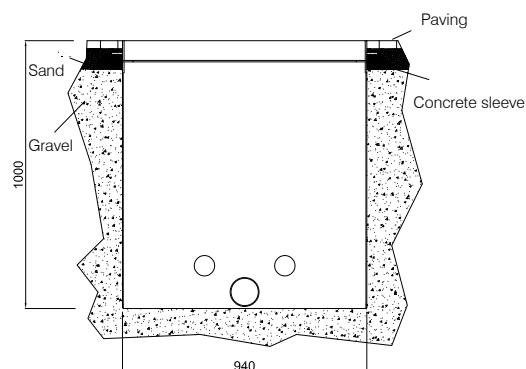
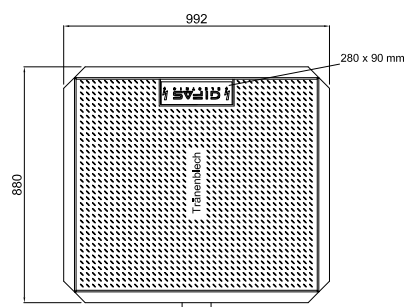


Solid stainless steel construction (V2A), load capacity up to 15kN (special design up to 50 kN), gas springs for fully automatic opening, shaft cover made from non-slip steel floor plate, distributor as per the client's request.

Technical additions

Cover:	V2A non-slip steel floor plate.
Cable exit flap:	(135x90 mm) in the centre on the head side of the cover
Locking:	A self-cleaning lock with snap fastener closes the shaft cover (locking tool included in the scope of delivery).
Heating (optional):	To prevent the Floor Pit from being frozen in the closed position, a thermostatically controlled heating band is built into the lid of the Floor Pit housing.

It is the client's responsibility to ensure the standards-appropriate substructure, correct installation of the shaft and corresponding drainage. The shaft cover is not sealed against surface water.



for distributors 7
200 – 7900

Supplied package

Stainless steel construction with

- cover made from V2A non-slip steel floor plate
- solid rubber electrical distributor
- junction box

Fully assembled and wired.

CAMPETTO VIII (B125)



Solid stainless steel construction (V2A), load capacity up to 125kN, gas springs for fully automatic opening, shaft cover can be custom-filled, distributor as per the client's request.

Technical additions

Cover filling:	The pit with a depth of 70 mm can be custom-filled to blend in with its surroundings.
Cable exit flap:	(280x90 mm) in the centre on the head side of the cover
Locking:	A self-cleaning lock with snap fastener closes the shaft cover (locking tool included in the scope of delivery).
Heating (optional):	To prevent the Floor Pit from being frozen in the closed position, a thermostatically controlled heating band is built into the lid of the Floor Pit housing.

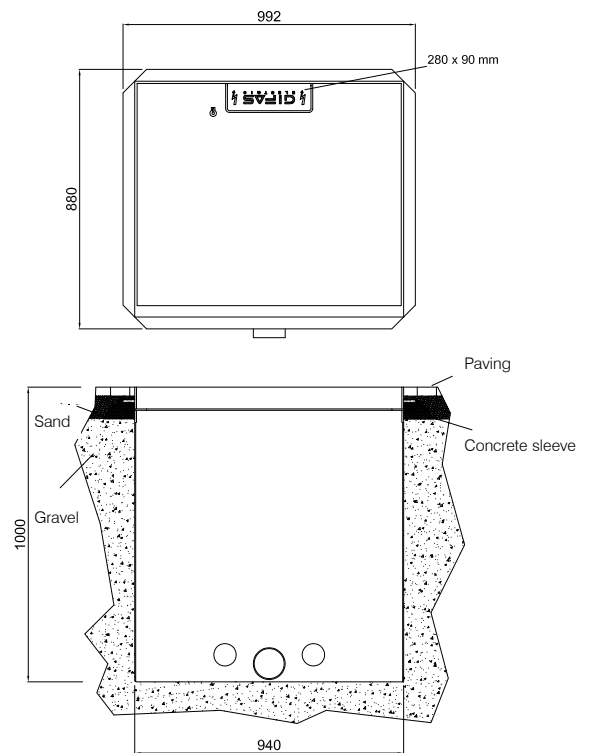
It is the client's responsibility to ensure the standards-appropriate substructure, correct installation of the shaft and corresponding drainage. The shaft cover is not sealed against surface water.

Supplied package

Stainless steel construction with

- fillable shaft cover
- solid rubber electrical distributor
- junction box

Fully assembled and wired.



for distributors 7200 – 7900

CAMPETTO (B125)



Lower Marsh Market, London, CAMPETTO VI



Kamp-Lintfort marketplace, CAMPETTO VIII



Pforzheim marketplace, CAMPETTO VI



Münster Alter Steinweg, Innehof, CAMPETTO VI



Kaarst marketplace, CAMPETTO VI

CAMPETTO (B125/A15)



BUGA Coblenz, CAMPETTO VI and CAMPETTO VIII with submersible bell



Hampton Court Palace, CAMPETTO VI



Schriesheim Stadt, CAMPETTO VIII



BUGA Schwerin, CAMPETTO V (A15)



Stadt Bitburg, CAMPETTO VI



Stadt Brühl CAMPETTO VI

CAMPETTO (B125)



Nordfrost Wilhelmshaven, CAMPETTO VI



CFL workshop, Luxembourg, CAMPETTO VI



Daimler presentation hall, CAMPETTO VI



Melitta Minden, CAMPETTO VI



Max Planck Institute, CAMPETTO VIII



Hamburg CruiseCenter, CAMPETTO VIII

CAMPETTO (B125/A15)



St. Jacob Park, Basel, CAMPETTO V (A15)



London Olympic Games, CAMPETTO VI



Frankfurt Bretanobad, CAMPETTO VI installation



Duisburg Tiger&Turtle, CAMPETTO V (A15) + CAMPETTO VI (B125)



Sea King military hangar, CAMPETTO VIII



Airport hangar, CAMPETTO VI

CAMPETTO installation and assembly procedure



Excavating the installation pit



Topping up the installation pit



Insertion of the unit



Filling



Decanting and concreting-in



Adaptation to the surroundings with filler material



Fully installed CAMPETTO

RETRANT

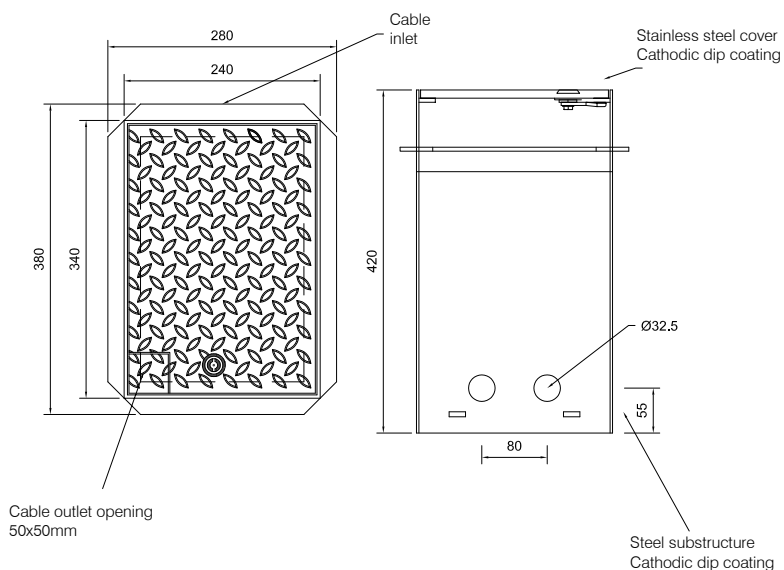


Product features

- Solid stainless steel construction, rust-free
- Completely maintenance-free (E-check)
- Cover made from non-slip steel floor plate
- Easy operation
- Can be walked on or driven over during operation
- Ground-flush installation
- Excellent safety thanks to the GIFAS double pressure method; the cover is held securely closed even without a lock
- Locking is performed using a countersunk, cover-flush dual bit lock (1 key included in the scope of delivery)
- Cable exit for cables is located in the shaft cover

It is the client's responsibility to ensure the standards-appropriate substructure, correct installation of the shaft and corresponding drainage. The shaft cover is not sealed against surface water.

Technical data	RETRANT
Area of use	Underfloor distributors for restricted spaces
Maximum load	Up to 30kN (3t)
Classification as per EN 124	15 kN (1.5t) / A15
Cover	Stainless steel non-slip steel floor plate 340x240mm
Weight	Approx. 25kg
Installation depth	Approx. 420mm
GIFAS solid rubber distributors	Series 2516, protection category IP65 Equipment options Individual as per the client's wishes



PICCOLINO 120 / 200



PICCOLINO 120



PICCOLINO 200

Product features

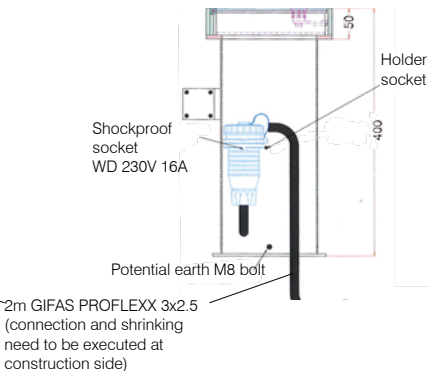
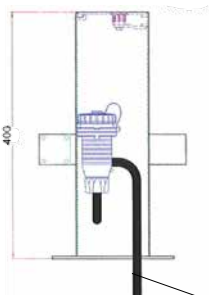
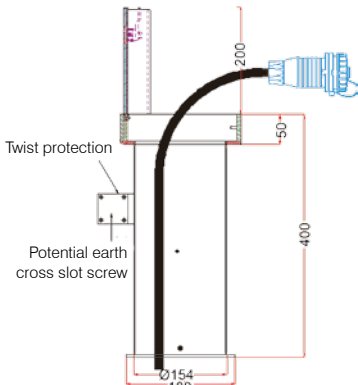
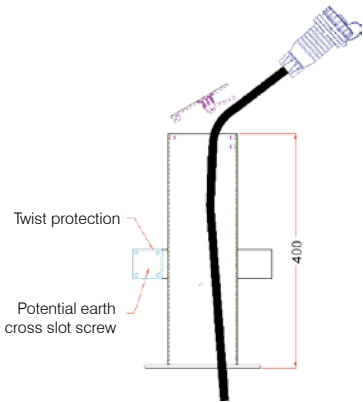
- Solid stainless steel construction, rust-free
- Completely maintenance-free (E-check)
- Cover made from non-slip steel floor plate
- Easy operation
- Can be walked on or driven over during operation
- Ground-flush installation
- Excellent operating safety thanks to reclosing after commissioning
- Locking is performed using a countersunk, cover-flush dual bit lock (1 key included in the scope of delivery)
- Cable exit opening in the cover lid for cables up to d = 15 mm (PICCOLINO 120), d = 25 mm (PICCOLINO 200)

It is the client's responsibility to ensure the standards-appropriate substructure, correct installation of the shaft and corresponding drainage. The shaft cover is not sealed against surface water.

Technical data	PICCOLINO 120	PICCOLINO 200
Area of use	Underfloor distributors for restricted spaces	Underfloor distributors for restricted spaces
Classification as per EN 124	2kN (200kg)	250 kN (25 t) / C250
Cover	Stainless steel non-slip steel floor plate 120x120mm	Stainless steel non-slip steel floor plate 200x200mm
Weight	Approx. 4.2kg	Approx. 7.5kg
Installation depth	Approx. 400mm	Approx. 400mm
Equipment options	2m GIFAS-PROFLEXX-07 cable 3x2.5 m² 1 protective contact coupling 16A/230V (IP 68) or 1 CEE coupling 16A/400V (IP67)	2m GIFAS-PROFLEXX-07 cable 3x2.5 m² 1 protective contact coupling 16A/230V (IP 68) or 1 CEE coupling 5x16A/400V (IP 67) or 1 CEE coupling 5x32A/400V (IP 67)

PICCOLINO 120

PICCOLINO 200



RETRANT / PICCOLINO



Kurhaus Wiesbaden, RETRANT



Neuzelle monastery, RETRANT



CFL workshop, Luxembourg, RETRANT



Stuttgart Pariser Platz, RETRANT



Bremen Wesercafé, RETRANT



Residential building, PICCOLINO 200

CONTACT US TODAY

New products and specialist solutions, along with the latest product catalogue, can be found on our website.

www.gifas.de

Technical modifications reserved 08/2017



GIFAS
ELECTRIC

GIFAS ELECTRIC GmbH
Borsigstrasse 9
41469 Neuss
GERMANY

+49 2137 105-0
+49 2137 105-230
verkauf@gifas.de
www.gifas.de